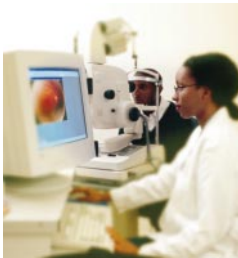


# FIVE STAR HEALTHCARE ACCESS ...for Hotels Around the World



**For hotels across the U.S. and around the world**, AET's I\*NET™ global telecommunications network can be most accommodating. The revolutionary far-reaching system gives hotels easy access to a world of healthcare practitioners, education and information. Guests at Sheraton, Marriott, Ritz-Carlton, Four Seasons, Best Western and others need only connect to an AET medical telecom operations center to benefit from a wide range of clinical and educational services—including real-time access to their own physician. AET can even provide medical telecom access to large office buildings and similar facilities.



## REAL-TIME CLINICAL AND EDUCATIONAL SERVICES

AET leverages today's most advanced communications technologies to deliver telemedicine and tele-education—in real time. Using intercontinental video/audio links, E-1 line Internet connectivity and communications satellite transmission, I\*NET brings a world of information, education, and medical science to hotels worldwide. AET clinical services include MRI, CT scans, diagnostics, pathology, oncology and dermatology and psychology. Educational services include everything from distance learning and patient education to for-credit courses and more.



## ROUND-THE-CLOCK ACCESS

I\*NET provides clinical services 24 hours a day, helping healthcare providers diagnose and manage their patients' medical conditions—when extensive travel is either impractical or cost-prohibitive. Services are provided in three ways:

**Routine Services**—patient information sent electronically to the I\*NET hub where a physician performs an analysis and returns a report within 24 to 48 hours.

**Scheduled Consultations**—arranged in advance for real-time interaction between the patient, the patient's current physician, and a U.S. based physician specialist.

**Emergency Consultations**—real-time interaction between patient, the patient's current physician, and a U.S. based physician specialist.



## TELE-EDUCATION & SEMINARS

AET's extensive network of academic and institutional contacts can provide high quality, for-credit course work, seminars, pre-recorded and real time health programming for lay audiences, and non-health conferences through I\*NET.

*For more information, contact us at*

email: [info@aetmedical.com](mailto:info@aetmedical.com) [www.aetmedical.com](http://www.aetmedical.com)

**WORLD WIDE HEADQUARTERS**  
10411 Clayton Rd., Suite 300  
St. Louis, MO 63131 USA  
314.994.7200 Fax: 314.994.7222

**MIDDLE EAST GATEWAY**  
52, Gamaat El-Dewal El Arabia St., Fl. 17, Ste. 112  
Mohandseen, Cairo, Egypt  
Phone/Fax: 202.760.2706 or 202.748.1961

**US REGIONAL OFFICE**  
1410 North 13th Street  
Norfolk, NE 68701 USA  
402.379.2322 Fax: 402.379.9231

**US MARKETING / SALES OFFICE**  
401 South 39th Street, Suite 300  
Omaha, NE 68131 USA  
402.344.2000

